

# Quick Upgrade Flowcharts

**Applicable to:** Sun StorEdge 3000 Family Arrays  
**Revision:** A **Date:** 06/10/05

Designed for users experienced with Sun StorEdge 3000 Family arrays, this document provides two flowcharts:

- The first flowchart is for a major upgrade from 3.xx controller firmware to 4.xx controller firmware with the upgrade script. Be sure to review the below Prerequisites and Preliminaries before using the upgrade script.
- The second flowchart is for a minor upgrade from one 4.11 version to a higher 4.11 version.

For detailed upgrade procedures, refer to the README file in this patch.

For script troubleshooting and related error messages, refer to the script\_troubleshooting.pdf file in this patch.

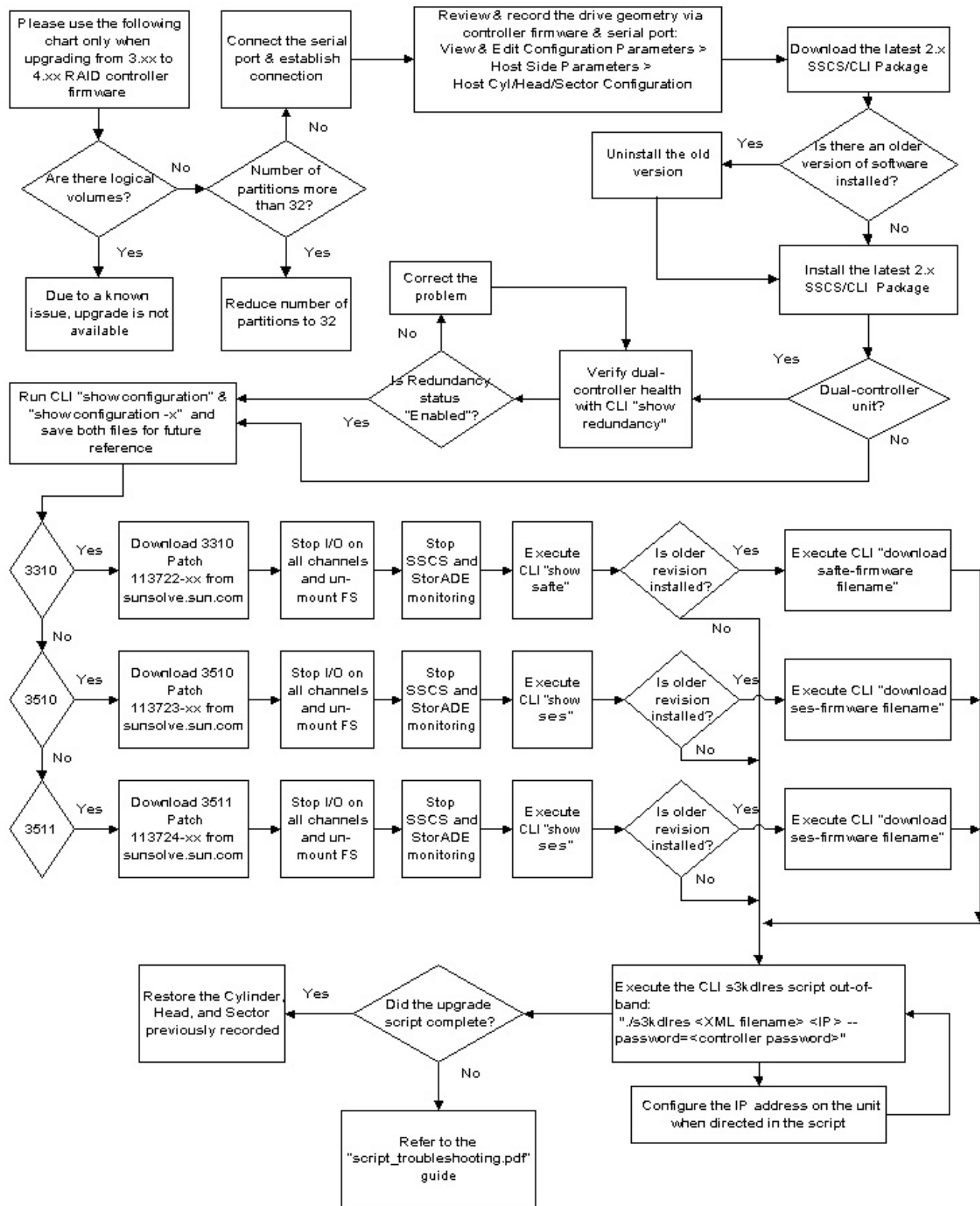
## Prerequisites for Performing a 3.xx to 4.xx Firmware Upgrade with a Script

1. Check that you do not have logical volumes. You cannot use the upgrade script with logical volumes.
2. Confirm that you are connected to the Ethernet port of your array, have an IP address or device name, and can access the array out-of-band.
3. Create a complete, verified backup of all data.
4. Upgrade SAF-TE/SES prior to running the script:
  - SAF-TE = 1170 for SCSI
  - SES = 1046 for FC
  - SES = 0413 for SATA
5. Make sure PLD is at 1000 prior to running script.
6. Make sure SATA router is at 555a prior to running script.
7. Make sure that no logical drive has more than 32 partitions.
8. Make sure that you have an RS-232 serial connection to the RAID controller serial port.
9. Record any masking or filtering from View and Edit Host LUNs.
10. Record heads, cylinders, and sectors drive geometry via the serial interface: "View and Edit Configuration Parameters > Host Side > Heads, Cylinders, Sectors"
11. Make sure sccli 2.0.0 (or higher) is installed on the host that will be used to perform the upgrade.
12. Stop all background processes (e.g. SSCS, Diagnostic Reporter, StorADE, etc).
13. Stop all I/O activity to the RAID system to be upgraded:
  - a. Unmount any mounted LUNs.
  - b. Stop all databases and software that access the system.
14. Verify that all files to be used during the upgrade are in the correct directory.
15. Shut down all hosts that boot from the system to be upgraded.
16. If the controller is using password protection *and* out-of-band is used, record the password.

## Preliminaries for Performing a 3.xx to 4.xx Firmware Upgrade with a Script

1. Verify communication with the RAID array.
2. Save configuration parameter information using sccli.
  - a. Save show config as a text file (suggested filename: se3xxx-chassisSN.txt)
  - b. Save show config as an XML file (suggested filename: se3xxx-chassisSN-bkup.xml)

## Flowchart for Upgrading 3.xx to 4.xx Controller Firmware



## Flowchart for Upgrading 4.xx to 4.xx Controller Firmware

This flowchart outlines the steps to perform a minor upgrade from one 4.11 version to a higher 4.11 version.  
NOTE: This flowchart will apply to the Sun StorEdge 3310 SCSI array when a new patch is available.

