

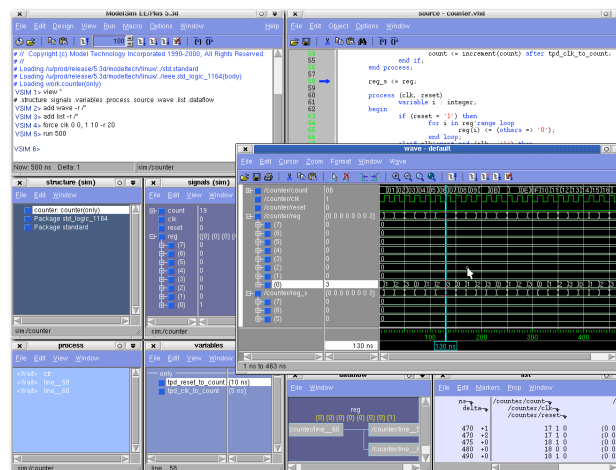
The MTI Panemanager Widget

A 2-D paned window
for a user configurable U/I

Brian Griffin

Mentor
Graphics®

Too many independent windows



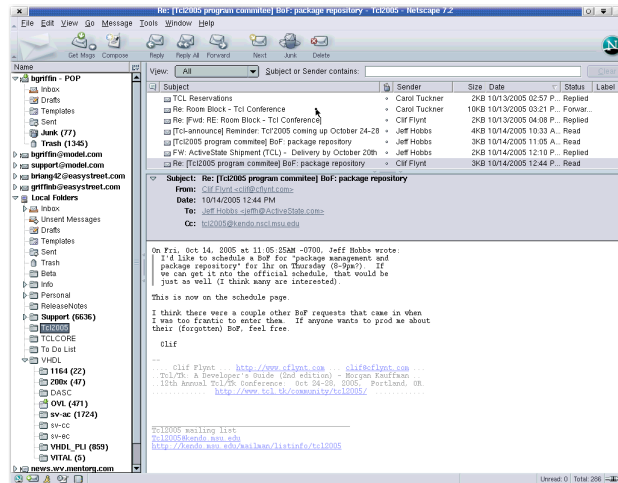
ModelSim 5.3d - February 2000

Mentor
Graphics

Copyright Mentor Graphics Company

2

Common 3-pane view

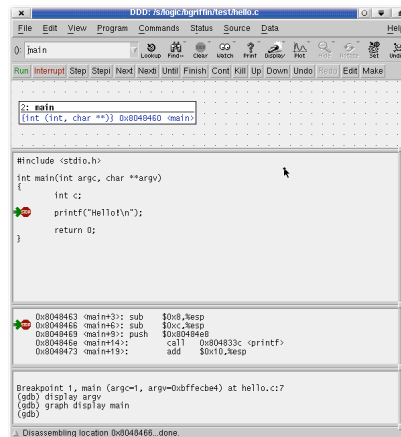


Mentor
Graphics

Copyright Mentor Graphics Company

3

DDD

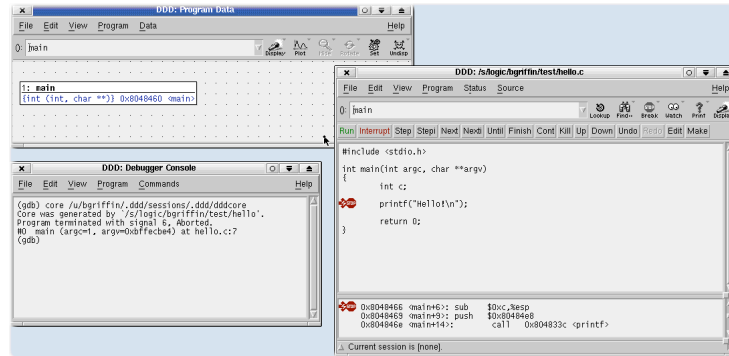


Mentor
Graphics

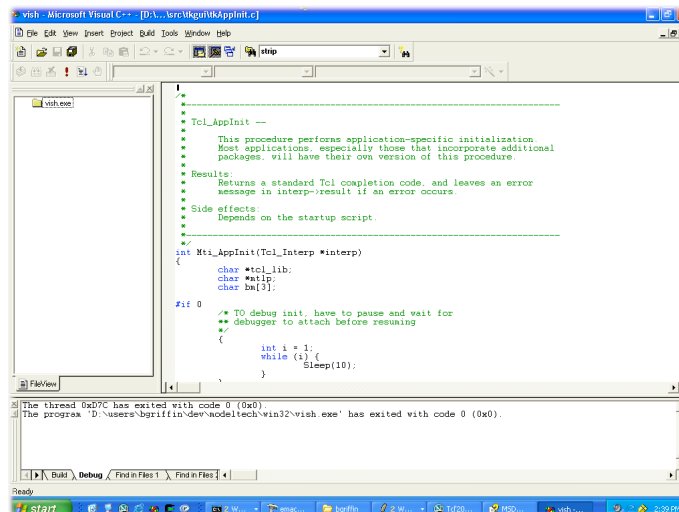
Copyright Mentor Graphics Company

4

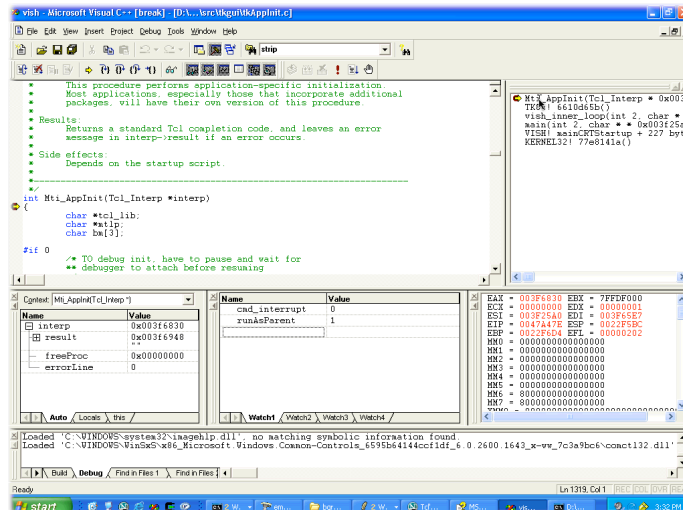
DDD w/Separate Windows



Microsoft's Visual Studio®



Debugger View

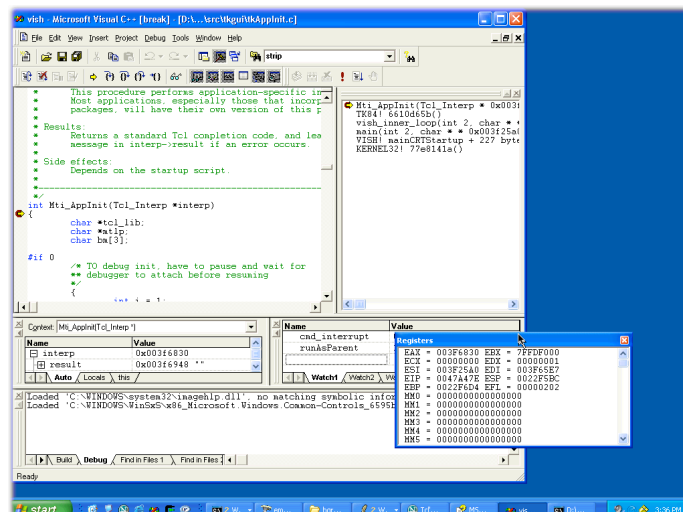


Mentor
Graphics

Copyright Mentor Graphics Company

7

Undocked Window

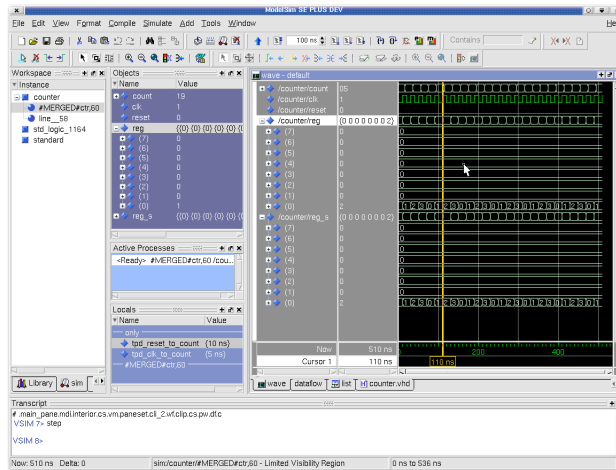


Mentor
Graphics

Copyright Mentor Graphics Company

8

Application with Panemanager

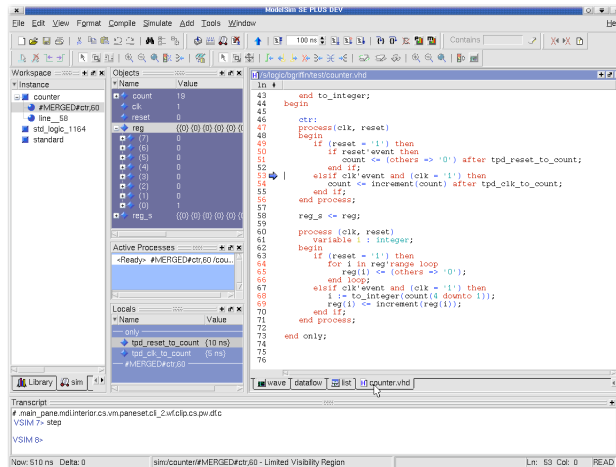


Mentor
Graphics

Copyright Mentor Graphics Company

9

Tabbed MDI

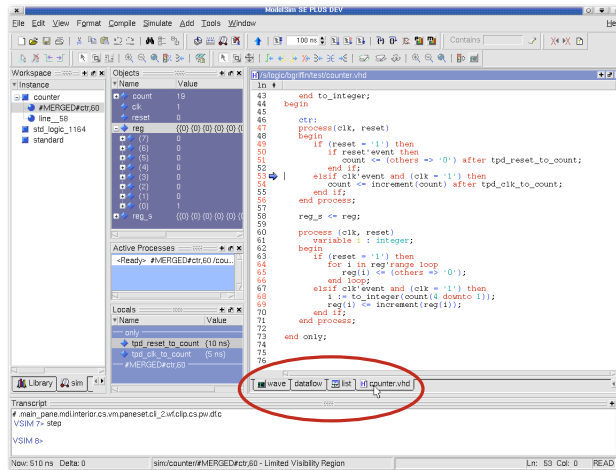


Mentor
Graphics

Copyright Mentor Graphics Company

10

Tabbed MDI

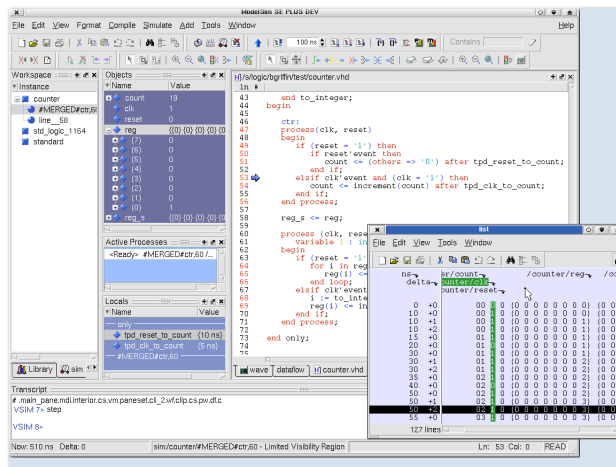


Mentor
Graphics

Copyright Mentor Graphics Company

11

Undocked Window

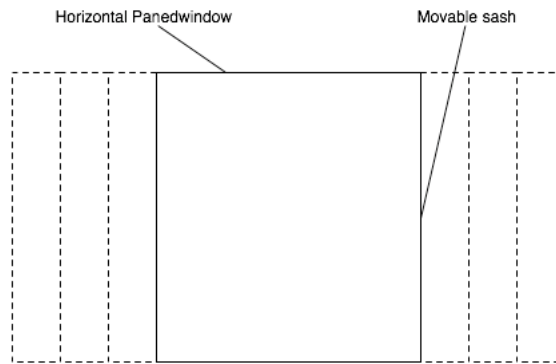


Mentor
Graphics

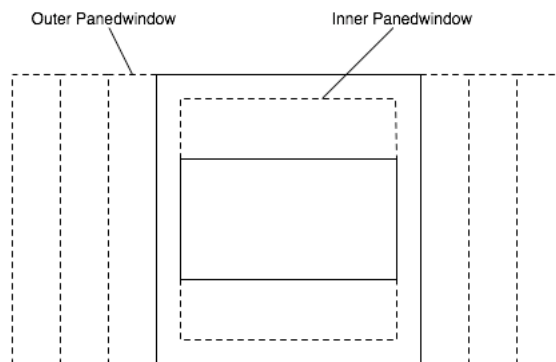
Copyright Mentor Graphics Company

12

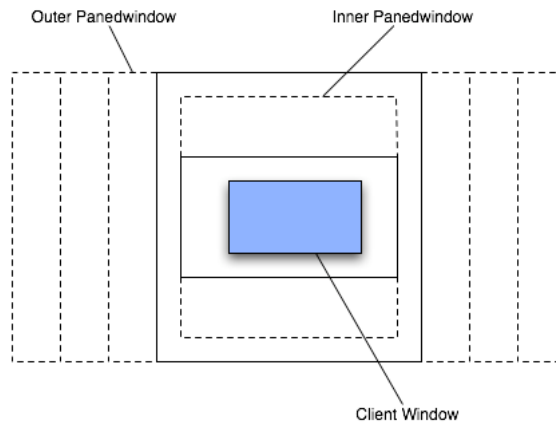
Tk Panedwindow



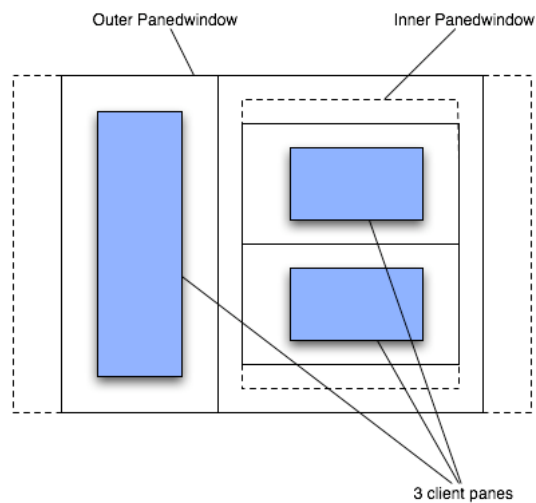
Nested Panedwindows



Just add client

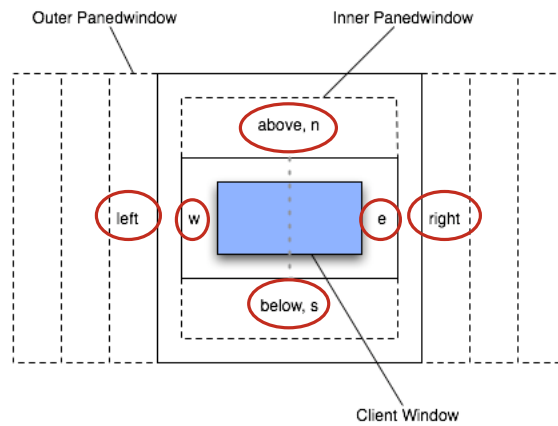


3 pane view

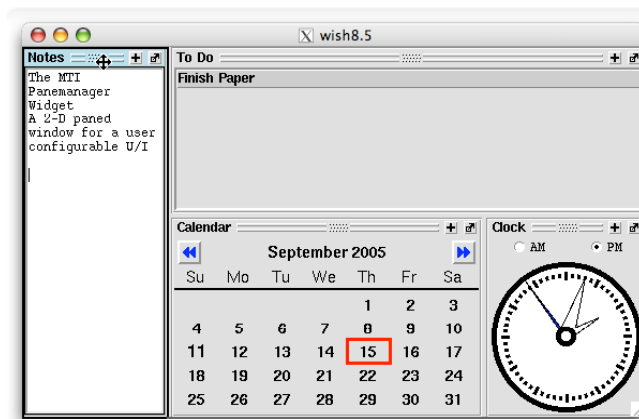


6 insert locations

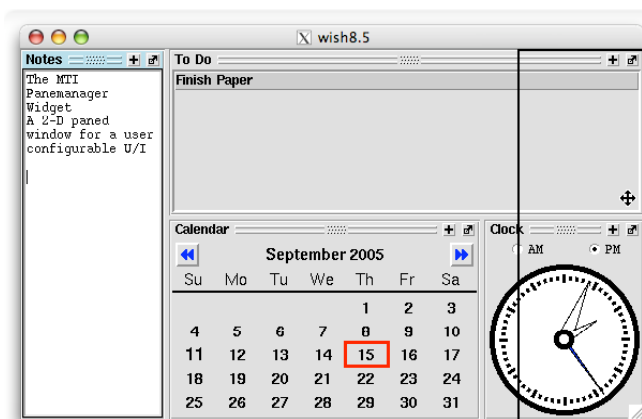
pathName **add** window *target* *where* ?args...?



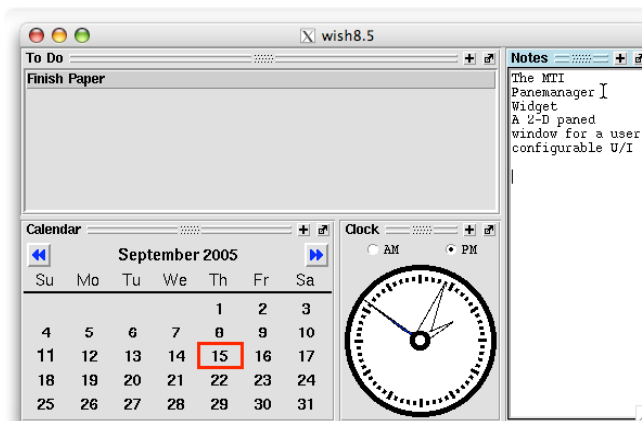
Drag & Drop Panes



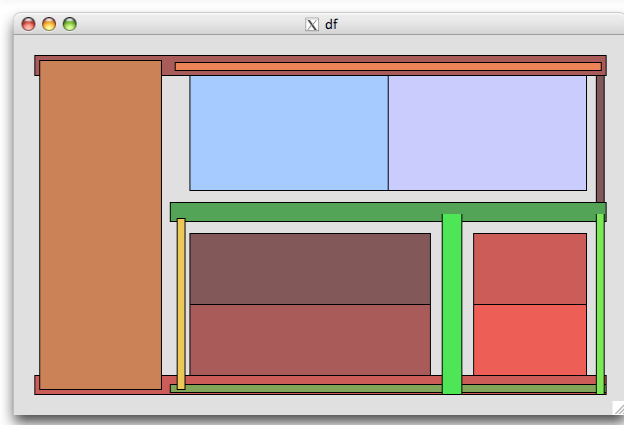
Drag & Drop Panes



Drag & Drop Panes

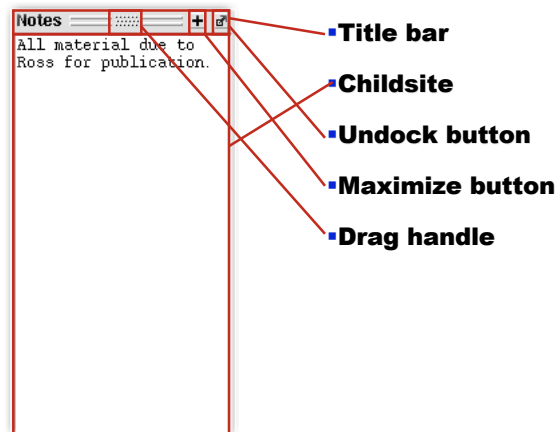


Drag map



Each rectangle represents a drop zone

Paneframe widget



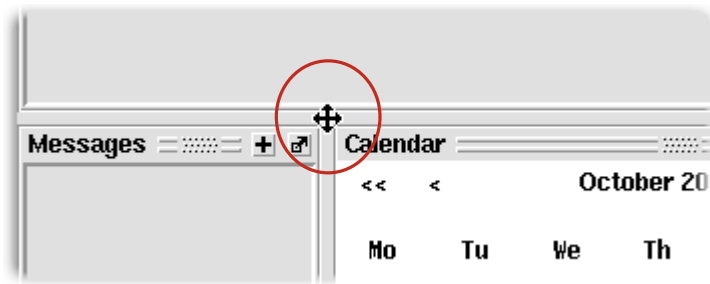
Serialized layout

- Save & restore layout information
- Layout info stored in a list containing:
 - Window name
 - Configure options
 - Size & location (including docked/undocked state)
- List is nested to represent nested Panedwindows

Example layout

```
horizontal {  
  {  
    .mp.f2 {-minsize 40 -stretch never} 157 na  
    {  
      .mp.f3 {-minsize 40} 292 na  
      .mp.f4 {-minsize 40} 444 na  
    } {-minsize 40 -stretch always} 345 na  
  } {-minsize 40 -stretch always} 446 na  
  .mp.f1 {-minsize 40 -stretch always} 582 na  
}
```

Corner drag 2-d resize



Related TIPS

- #125: Converting between Frame and Toplevel Windows **[wm manage]**
 - State: Draft
- #177: Add **-stretch** Option to panedwindow Widget
 - State: Final
- #179: Add **-hide** Option to panedwindow Widget
 - State: Final